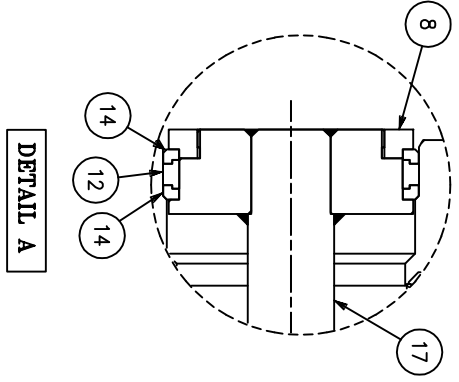
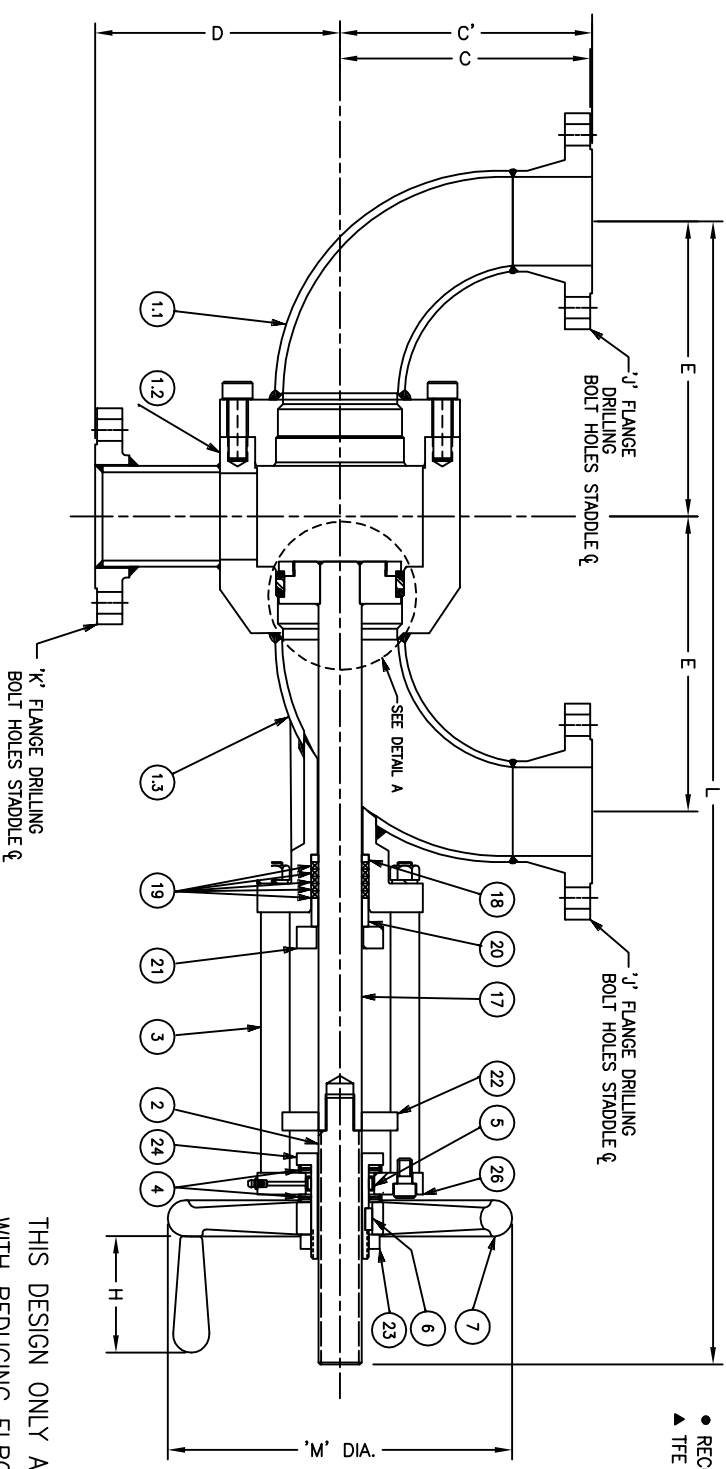


MID-BODY	BRANCHES	C 150#	C' 300#	D	E	H	J	K	L	M
1	1	5-3/16	5-7/16	5-3/16	6-1/4	4			30-1/2	10
1-1/2	1-1/2	6-3/16	6-7/16	6-3/16	7-3/4	4	"	"	35	10
2	2	7	7-1/4	7	8-3/8	4	#	#	38	12
3	3	8-3/4	9-1/8	8-1/2	10-1/4	4			47-1/2	12
4	4	12	12-3/8	12	15-1/2	4			61	12
6	6	15-1/2	15-7/8	15-1/2	19-3/8	4	ANSI STD.	ANSI STD.	74	18

NO.	DESCRIPTION	MATERIAL
1.1	BODY	CARBON STEEL
1.2	MID-BODY	CARBON STEEL
1.3	BONNET	CARBON STEEL
2	STEM	STAINLESS STEEL
3	YOKE POST (4)	STAINLESS STEEL, TYPE 303
4/5	BEARING SET	THRUST/RADIAL
6	KEY	CARBON STEEL
7	HANDWHEEL	MALLEABLE IRON
8	PLUNGER HEAD NUT	STAINLESS STEEL, TYPE 316
12	SEAL RING	▲ TFE
13	FLEXITALLIC SEAL	FLEXPRO
14	COMPRESSION RING (2)	STAINLESS STEEL, TYPE 316
17	DISC AND ROD	STAINLESS STEEL, TYPE 316
18	GUIDE RING	▲ TFE
19	PACKING SET	▲ TFE-KEVLAR®
20	GLAND BUSHING	STAINLESS STEEL, TYPE 316
21	GLAND FLANGE	STAINLESS STEEL, TYPE 304
22	PLUNGER CROSSHEAD	STAINLESS STEEL, TYPE 304
23	STEM NUT	STAINLESS STEEL, TYPE 416
24	YOKE BUSHING	ALUMINUM BRONZE
26	YOKE FLANGE	STAINLESS STEEL, TYPE 304

● RECOMMENDED SPARE PARTS  
▲ TFE TO 510°F -OPTIONAL MATERIALS TO 1000°F



THIS DESIGN ONLY AVAILABLE IN MATERIALS WITH REDUCING ELBOWS AVAILABLE

TRETTNER MANUFACTURING  
LANSDALE, PA.

PLUNGER SEAL VALVE  
CHANGEOVER

REV#	DESCRIPTION	BY	ZONE	DATE	APPROVED

SCALE: NIS	DRAWN: MS	CHECKED: MS	APPROVED: MS	DATE: 11/3/08	NUMBER: 100164	REV: -
------------	-----------	-------------	--------------	---------------	----------------	--------